

EE 315
MICROPROCESSORS

LABORATORY MANUAL

2019

Erhan AKAN



Introduction

This document is the laboratory manual for the EE459 Microprocessor-based System Design course. The document includes information on the evaluation kit (EK) and the simulation environment that will be used in the labs.

Lab Rules

- In the laboratory sessions, you are expected to learn to program an ARM based micro-controller using a Texas Tiva C LaunchPad TM4C123G and the Keil μ Vision Integrated Development Kit.
- For this purpose, we strongly advise you to install Keil μ Vision IDE on your PCs.
- There will be quizzes before the labs practice, which will contain questions relating to the experiment to be held on that lab session. Both the quizzes and your lab performance will be graded.
- You will perform your experiments in groups of two.

About the Kit We Will Use

The TM4C123G LaunchPad Evaluation Kit is a low-cost evaluation platform for ARM Cortex-M4F based microcontrollers from Texas Instruments. The design of the TM4C123G LaunchPad highlights the TM4C123GH6PM microcontroller with a USB 2.0 device interface and hibernation module.

The EK-TM4C123GXL also features programmable user buttons and an RGB LED for custom applications. The stackable headers of the TM4C123G LaunchPad BoosterPack™ XL Interface make it easy and simple to expand the functionality of the TM4C123G LaunchPad when interfacing to other peripherals with Texas Instruments MCU BoosterPack.

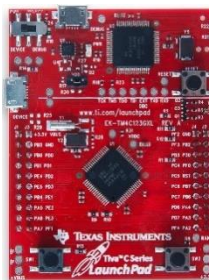


Figure 1 TM4C123G LaunchPad



Features:

The ARM Cortex-M4F Based MCU TM4C123G LaunchPad Evaluation Kit (EK-TM4C123GXL) offers these features:

- High Performance TM4C123GH6PM MCU:
- 80MHz 32-bit ARM Cortex-M4-based microcontrollers CPU
- 256KB Flash, 32KB SRAM, 2KB EEPROM
- Two Controller Area Network (CAN) modules
- USB 2.0 Host/Device/OTG + PHY
- Dual 12-bit 2MSPS ADCs, motion control PWMs
- 8 UART, 6 I2C, 4 SPI
- On-board In-Circuit Debug Interface (ICDI)

It is possible to buy a EK-TM4C123GXL LaunchPad in Turkey. Please check the web for different sellers. The prices are around 80₺.

About Keil μ vision

Keil μ vision is free up to 32kb of code size. The μ Vision IDE combines project management, run-time environment, build facilities, source code editing, and program debugging in a single powerful environment. μ Vision supports multiple screens and allows you to create individual window layouts anywhere on the visual surface.

The μ Vision Debugger provides a single environment in which you may test, verify, and optimize your application code. The debugger includes traditional features like simple and complex breakpoints, watch windows, and execution control and provides full visibility to device peripherals.



µVision Project Manager and Run-Time Environment

With the µVision Project Manager and Run-Time Environment you create software application using pre-build software components and device support from Software Packs. The software components contain libraries, source modules, configuration files, source code templates, and documentation. Software components can be generic to support a wide range of devices and applications.

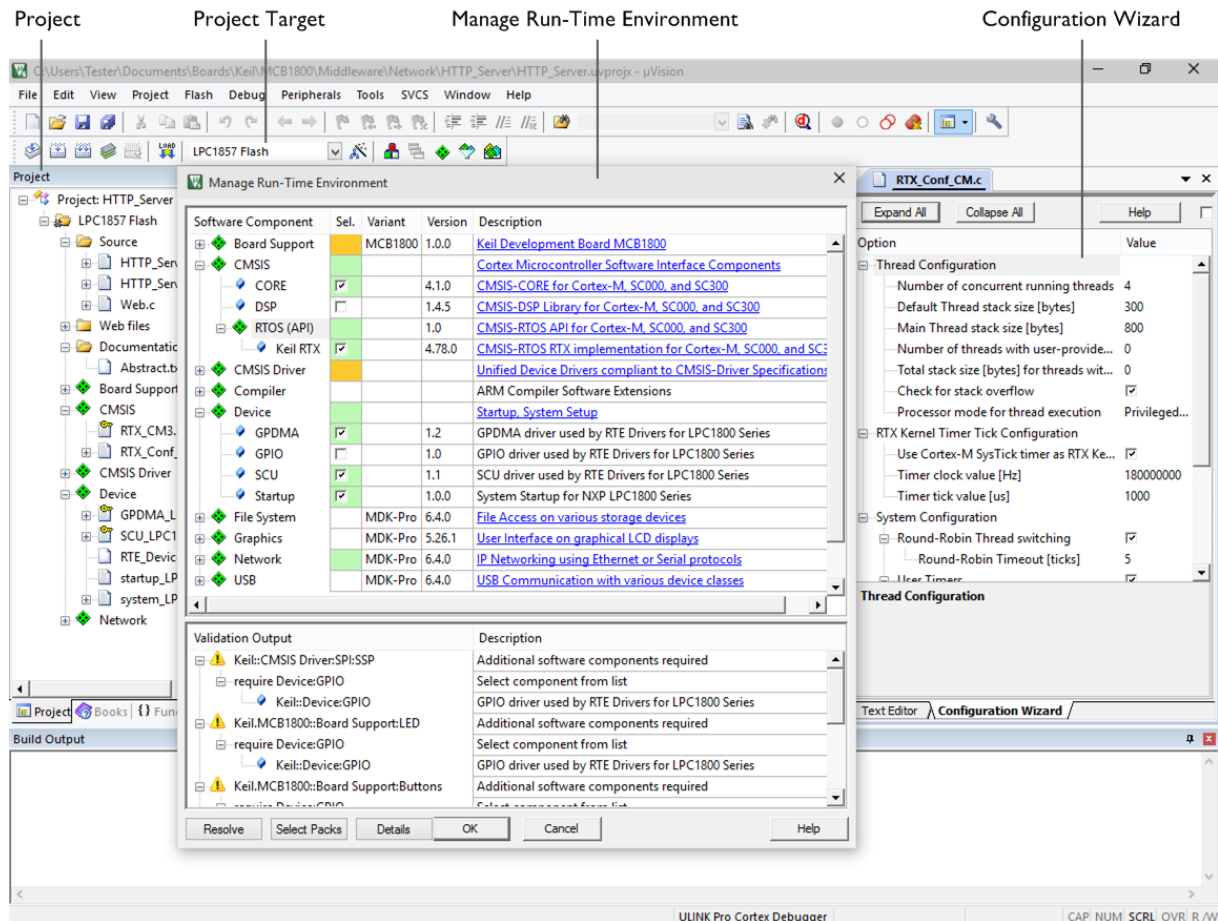


Figure 2

- The Project window shows application source files and selected software components. Below the components you will find corresponding library and configuration files.
- Projects support multiple targets. They ease configuration management and may be used to generate debug and release builds or adoptions for different hardware platforms.
- The Manage Run-Time Environment window shows all software components that are compatible with the selected device. Inter-dependencies of software components are clearly identified with validation messages.
- The Configuration Wizard is an integrated editor utility for generating GUI-like configuration controls in assembler, C/C++, or initialization files.



µVision Editor

The integrated µVision Editor includes all standard features of a modern source code editor and is also available during debugging. Color syntax highlighting, text indentation, and source outlining are optimized for C/C++.

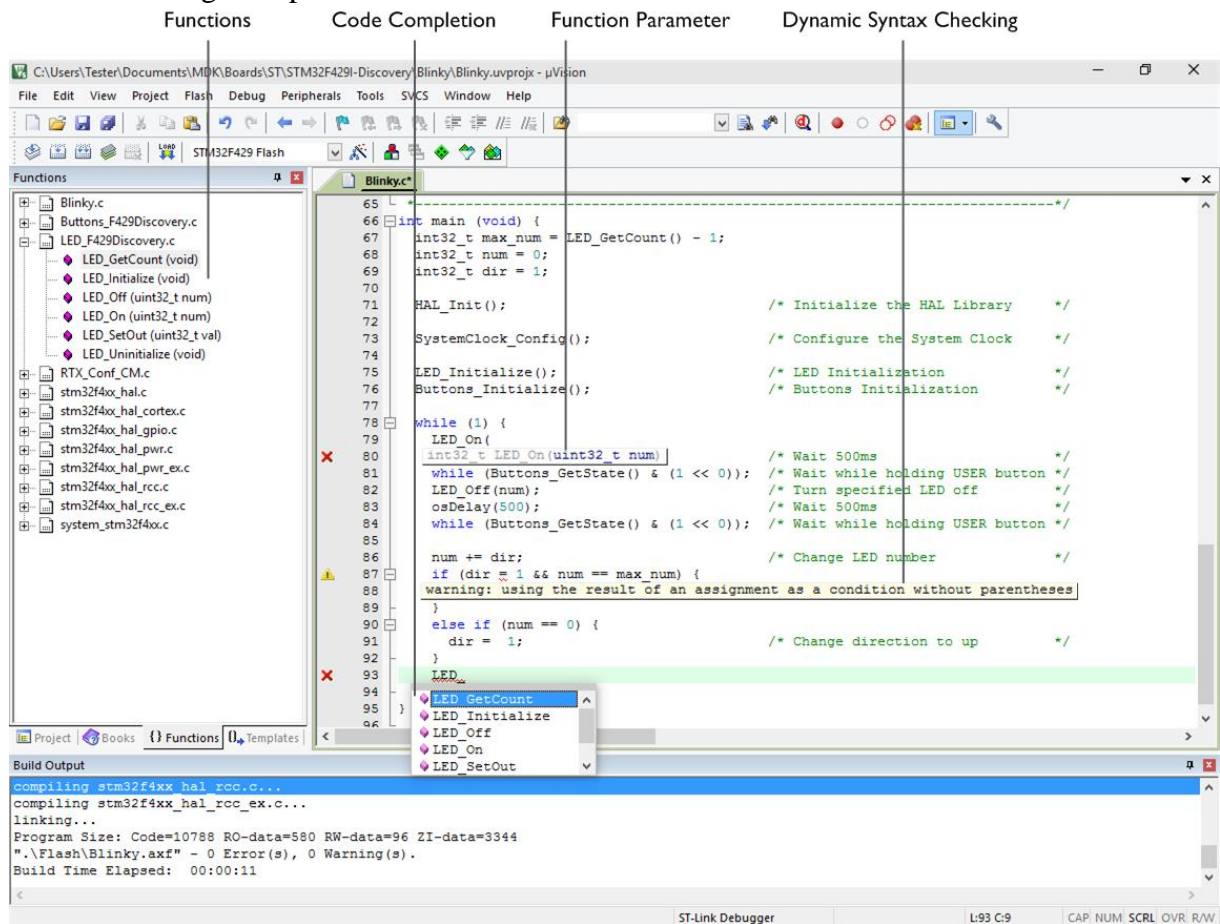


Figure 3

- The Functions window gives fast access to the functions in each C/C++ source code module.
- The Code Completion list and Function Parameter information helps you to keep track of symbols, functions, and parameters.
- Dynamic Syntax Checking validates the program syntax while you are typing and provides real-time alerts to potential code violations before compilation.



Download Software

First, download the files below using the links:

1. Keil μ Vision 5 for ARM processors:

<http://www.keil.com/fid/3qowa9wtdy9j1wzibrw1uymbumlgr1a96d2wd1/files/eval/mdk524a.exe>

If the link above does not work, use this (requires information):

<https://www.keil.com/demo/eval/arm.htm#/DOWNLOAD>

2. Driver support for the launchpad:

<http://www.ti.com/general/docs/lit/getliterature.tsp?literatureNumber=spmc016a&fileType=zip>

3. A useful version (2013) TM4C123GH6PM header file defines the register addresses as mnemonics for C language:

<http://users.ece.utexas.edu/~valvano/Volume1/tm4c123gh6pm.h>

4. A useful version (2013) TM4C123GH6PM header file defines the register addresses as mnemonics for ASSEMBLY language:

<http://users.ece.utexas.edu/~valvano/arm/tm4c123gh6pm.s>

5. An old version of ASSEMBLY startup file (startup.s):

<http://ee315.cankaya.edu.tr/uploads/files/startup.s>

6. TM4C123GH6PM Datasheet

<http://www.ti.com/lit/ds/symlink/tm4c123gh6pm.pdf>

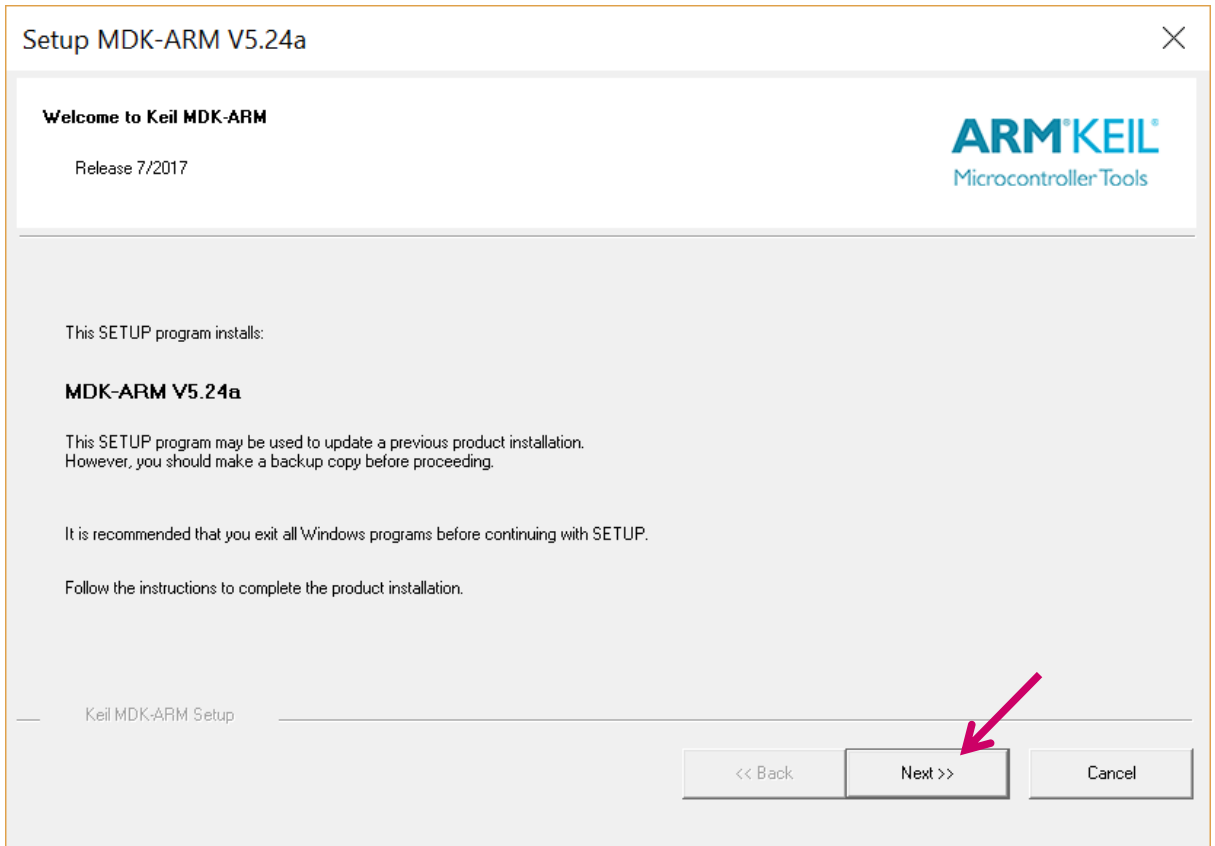
The folder should be like below:

Ad	Değiştirme tarihi	Tür	Boyut
stellaris_icdi_drivers	27.02.2018 20:56	Dosya klasörü	
MDK524a.EXE	19.01.2018 10:12	Uygulama	796.513 KB
MDK524a.EXE	19.01.2018 11:45	Uygulama	354.705 KB
startup.s	26.02.2018 20:39	S Dosyası	27 KB
tm4c123gh6pm.h	19.01.2018 11:25	H Dosyası	691 KB
tm4c123gh6pm.s	19.01.2018 11:25	S Dosyası	587 KB
tm4c123gh6pm.pdf	24.02.2018 13:07	Adobe Acrobat Belgesi	8.231 KB



Installation of Software

1. First, run MDK524a.exe and follow the instructions below:






Setup MDK-ARM V5.24a

License Agreement

Please read the following license agreement carefully.



To continue with SETUP, you must accept the terms of the License Agreement. To accept the agreement, click the check box below.

END USER LICENCE AGREEMENT FOR MDK-ARM

THIS END USER LICENCE AGREEMENT ("LICENCE") IS A LEGAL AGREEMENT BETWEEN YOU (EITHER A SINGLE INDIVIDUAL, OR SINGLE LEGAL ENTITY) AND ARM LIMITED ("ARM") FOR THE USE OF THE SOFTWARE ACCOMPANYING THIS LICENCE. ARM IS ONLY WILLING TO LICENSE THE SOFTWARE TO YOU ON CONDITION THAT YOU ACCEPT ALL OF THE TERMS IN THIS LICENCE. BY CLICKING "I AGREE" OR BY INSTALLING OR OTHERWISE USING OR COPYING THE SOFTWARE YOU INDICATE THAT YOU AGREE TO BE BOUND BY ALL OF

I agree to all the terms of the preceding License Agreement


Keil MDK-ARM Setup

<< Back Next >> Cancel

Setup MDK-ARM V5.24a

Folder Selection

Select the folder where SETUP will install files.



Press 'Next' to install MDK-ARM to these folders. Press 'Browse' to select different folders for installation.

Destination Folders

Core: C:\Keil_v5 Browse ...

Pack: C:\Keil_v5\ARM\PACK Browse ...

Keil MDK-ARM Setup

<< Back Next >> Cancel



Setup MDK-ARM V5.24a

Customer Information

Please enter your information.

Please enter your name, the name of the company for whom you work and your E-mail address.

First Name: Erhan

Last Name: Akan

Company Name: Cankaya University

E-mail: erhanakan@cankaya.edu.tr

Keil MDK-ARM Setup

<< Back Next >> Cancel

Windows Güvenliği

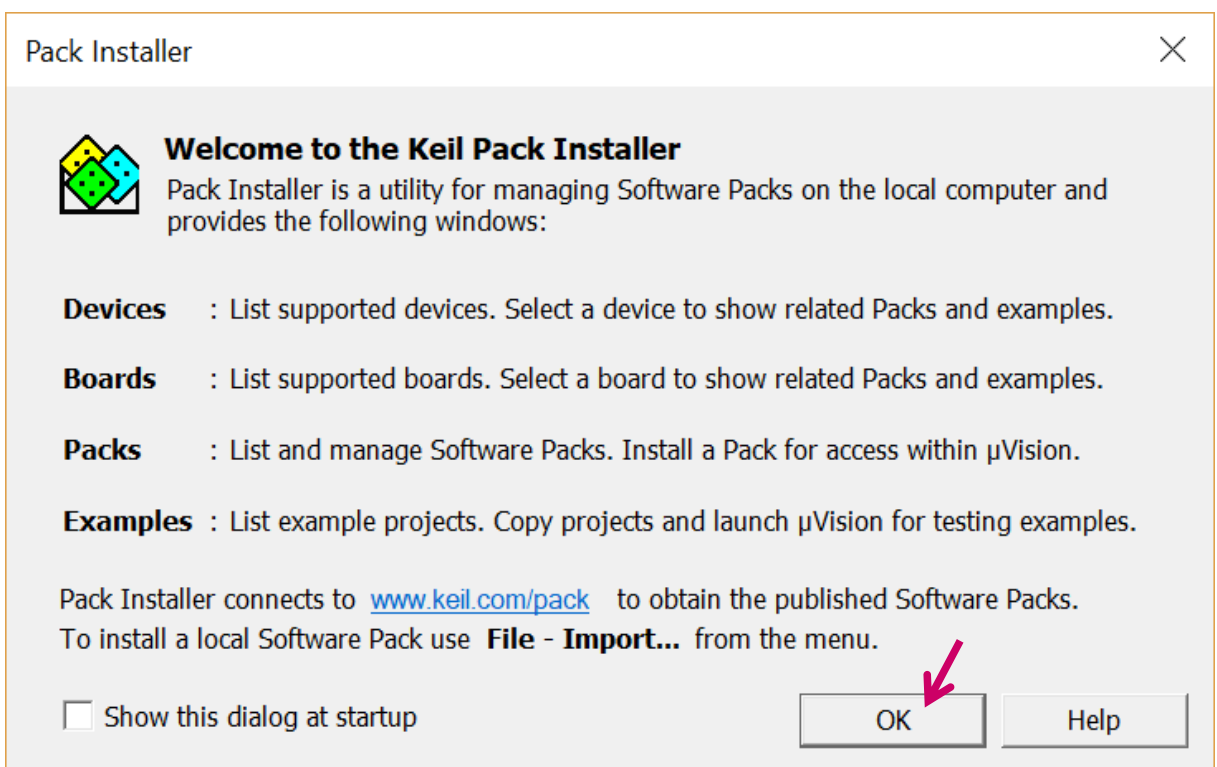
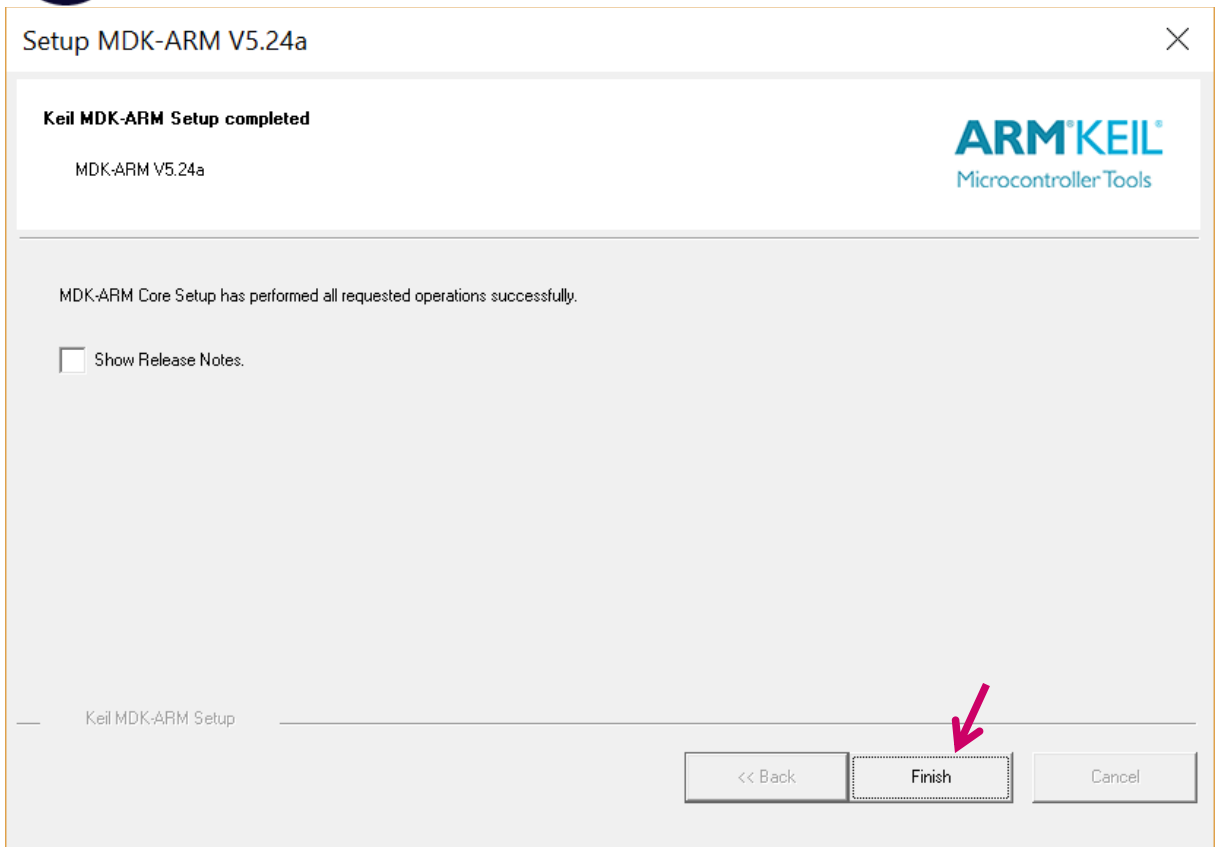
Bu aygıt yazılımını yüklemek ister misiniz?

Ad: KEIL - Tools By ARM Evrensel Seri Veri Y...
Yayımcı: ARM Ltd

Her zaman "ARM Ltd" kaynaklı yazılımlara güven.

Yükleme

Yalnızca güvendiğiniz yayımcıların sürücü yazılımlarını yüklemelisiniz. [Hangi aygıt yazılımını yüklemenin güvenli olduğuna nasıl karar veririm?](#)





And let it to update the software by itself:

Pack Installer - C:\Keil_v5\ARM\PACK

File Packs Window Help

Device:

Devices Boards

Search: [X] [Icon]

Device	Summary
All Devices	23 Devices
ARM	23 Devices

Packs Examples

Pack	Action	Description
Device Specific	0 Packs	No device selected
Generic	3 Packs	
ARM::CMSIS	Up to ...	CMSIS (Cortex Microcontroller Software Interface Star
Keil::ARM_C...	Up to ...	Keil ARM Compiler extensions for ARM Compiler 5 ar
Keil::MDK-M...	Up to ...	Middleware for Keil MDK-Professional and MDK-Plus

Output

Refresh Pack descriptions

Action (1 left): Update Pack descriptions, download http://www.keil.com/pack/Keil.STBlueNRG_DFP.pdsc 0% ONLINE

Pack Installer - C:\Keil_v5\ARM\PACK

File Packs Window Help

Device:

Devices Boards

Search: [X] [Icon]

Device	Summary
All Devices	5144 Devices
ABOV Semicon...	12 Devices
Active-Semi	4 Devices
Ambiq Micro	6 Devices
Amiccom	2 Devices
Analog Devices	12 Devices
ARM	45 Devices
Cypress	425 Devices
GigaDevice	99 Devices
HDSC	30 Devices
Holtek	123 Devices
Infineon	166 Devices
Lapis Semicon...	2 Devices
Maxim	4 Devices
MediaTek	2 Devices

Packs Examples

Pack	Action	Description
Device Specific	0 Packs	No device selected
Generic	23 Packs	
ARM::AMP	Install	Software components for
ARM::CMSIS	Update	CMSIS (Cortex Microcontr
ARM::CMSIS-Driver	Install+	CMSIS Drivers for external
ARM::CMSIS-Driver_Validation	Install	CMSIS-Driver Validation
ARM::CMSIS-FreeRTOS	Install+	Bundle of FreeRTOS for Co
ARM::CMSIS-RTOS_Validation	Install	CMSIS-RTOS Validation
ARM::mbedClient	Install	ARM mbed Client for Cor
ARM::mbedTLS	Install	ARM mbed Cryptographi
ARM::miniar	Install	mbed OS Scheduler for C
Huawei::LiteOS	Install	Huawei LiteOS kernel Soft
Keil::ARM_Compiler	Update	Keil ARM Compiler extens
Keil::Jansson	Install	Jansson is a C library for e
Keil::MDK-Middleware	Update	Middleware for Keil MDK-

Output

Update available for ARM::CMSIS (installed: 5.0.1, available: 5.2.0)

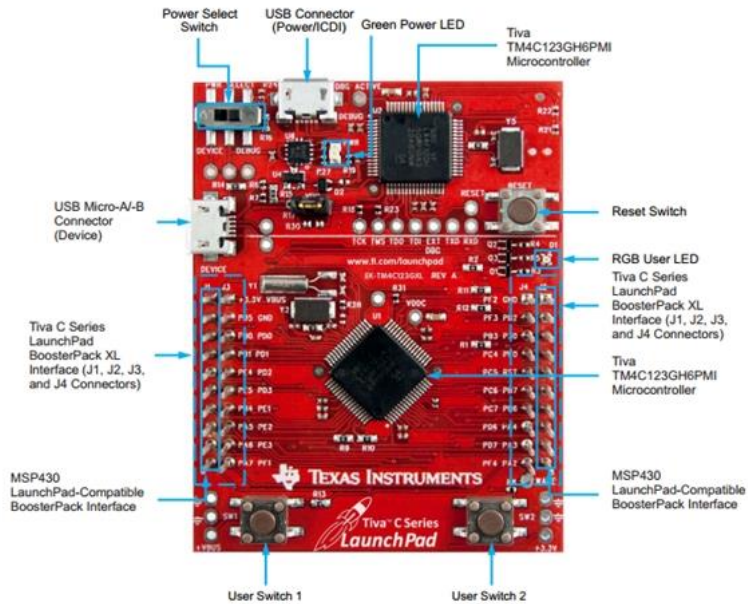
Update available for Keil::ARM_Compiler (installed: 1.3.1, available: 1.3.3)

Update available for Keil::MDK-Middleware (installed: 7.4.1, available: 7.5.0)

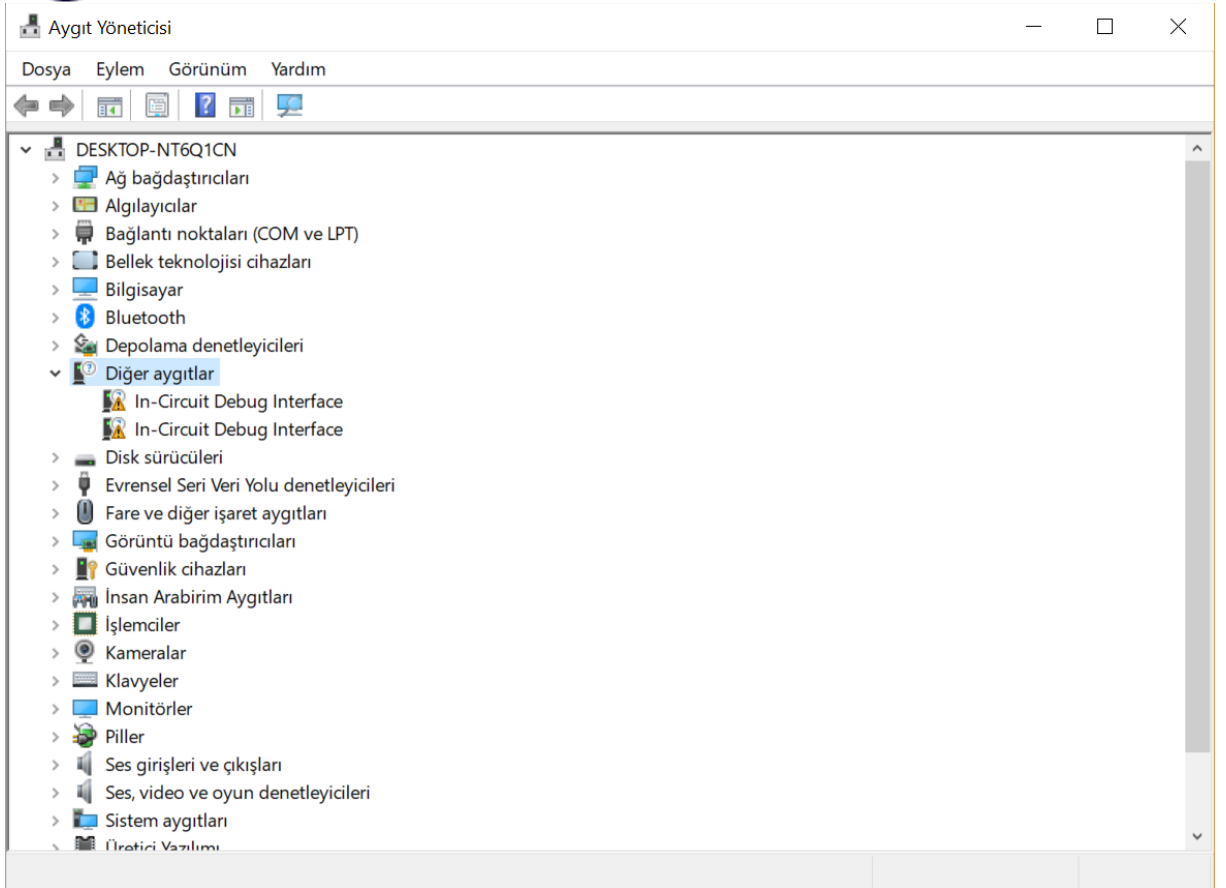
Ready ONLINE

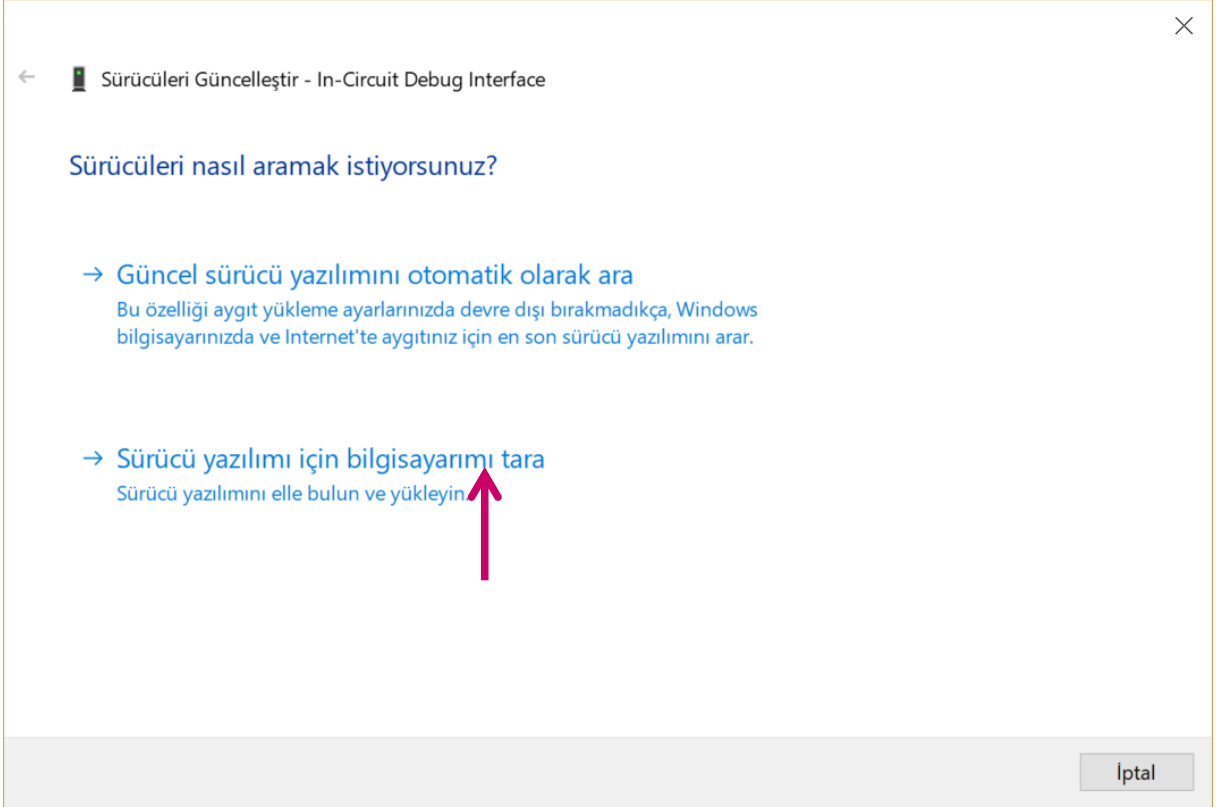
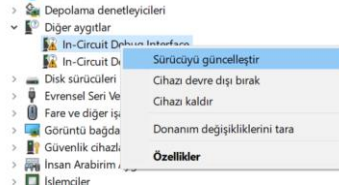


2. Then plug in the USB cable to the “Power/ICDI” port of the microcontroller and select “DEBUG” option using the “Power Select Switch” and then plug it into your computer:



3. The computer should try to recognize the device however, it will fail to detect our hardware.
4. Then open the “Device Manager” of Windows OS and follow the pictures below:







← Sürücülerini Güncelleştir - In-Circuit Debug Interface

Bilgisayarınızda sürücülerini arayın

Bu konumda sürücü ara:

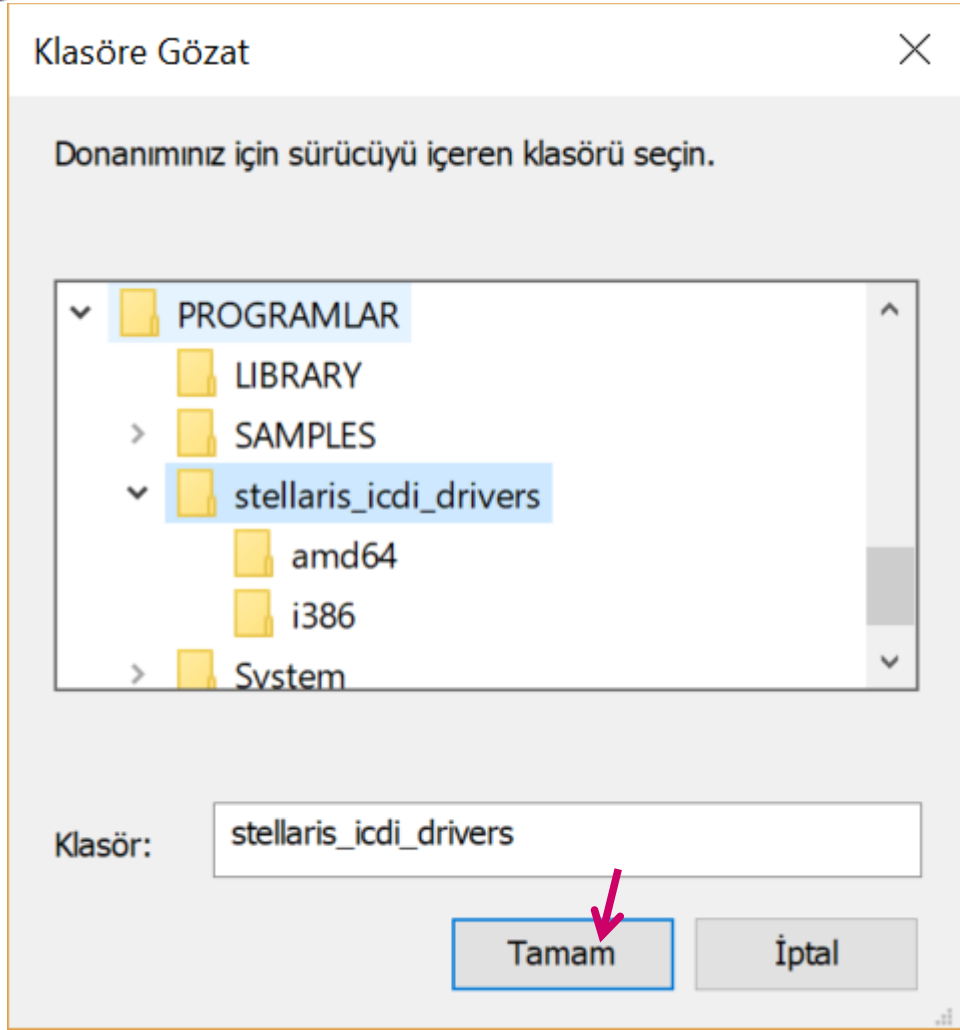
C:\Users\Erhan Akan\Documents

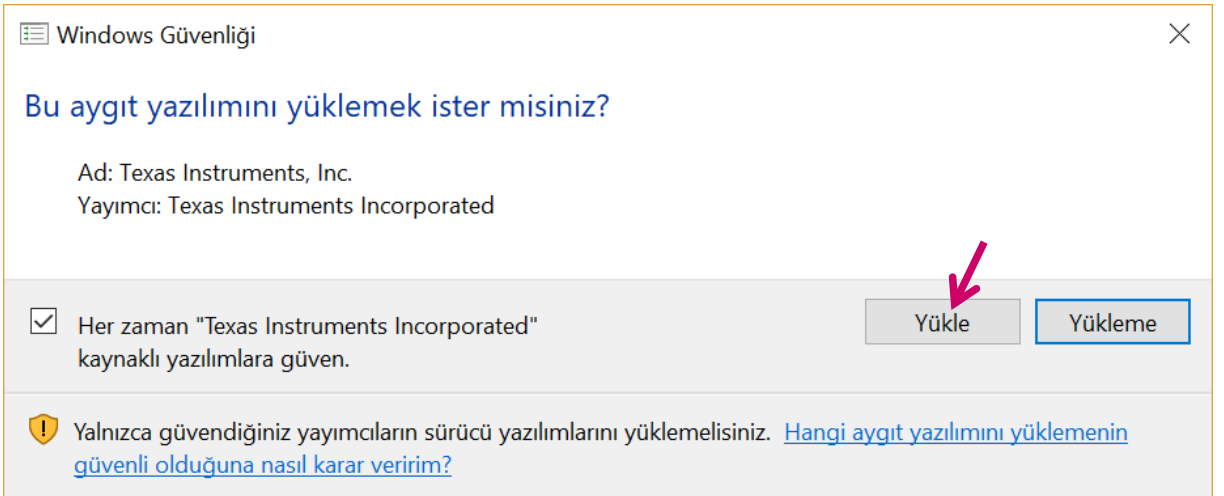
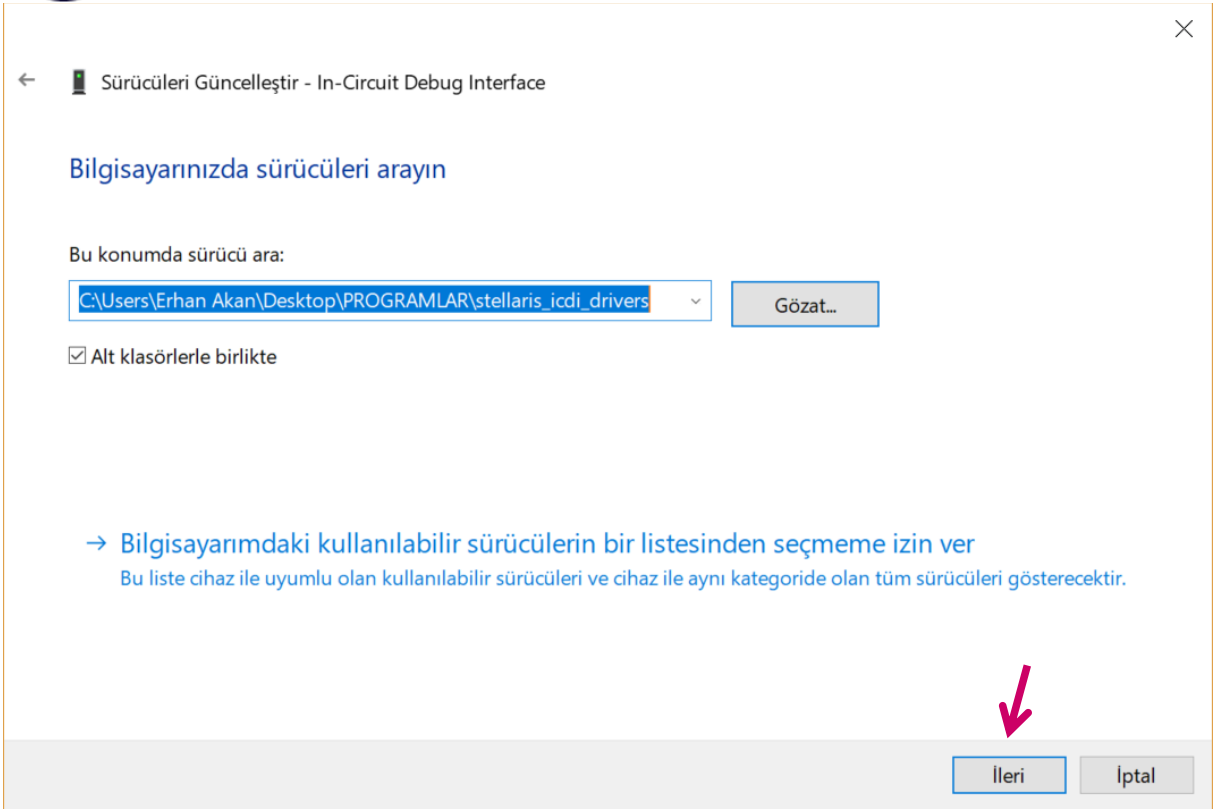
Gözet...

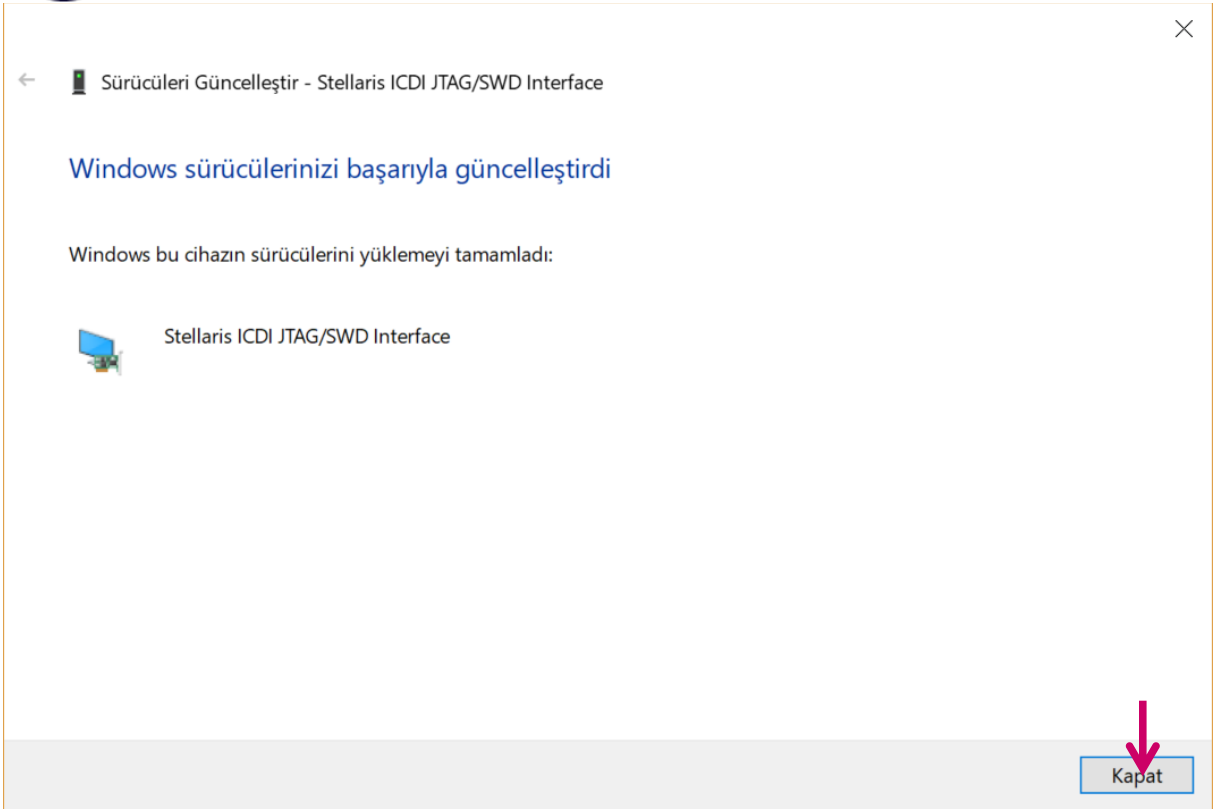
Alt klasörlerle birlikte

→ Bilgisayarındaki kullanılabilir sürücülerini bir listesinden seçmeme izin ver
Bu liste cihaz ile uyumlu olan kullanılabilir sürücülerini ve cihaz ile aynı kategoride olan tüm sürücülerini gösterecektir.

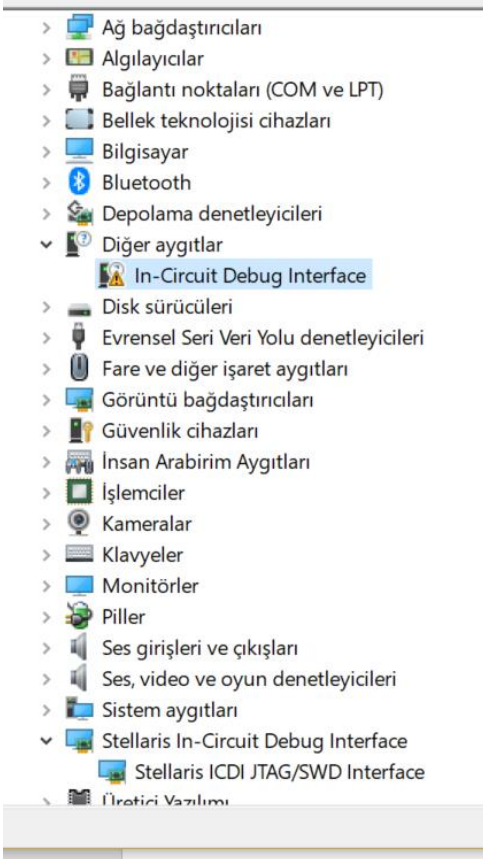
İleri İptal







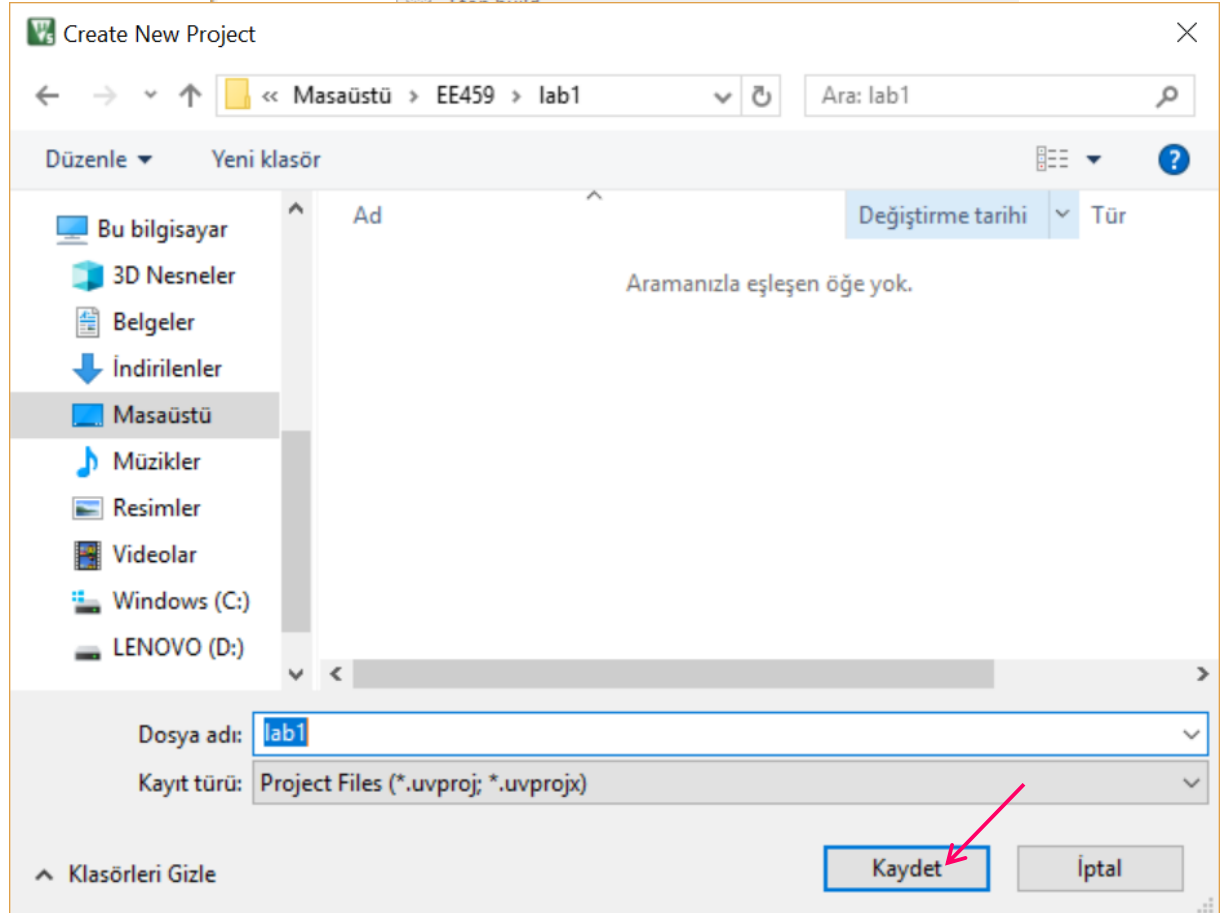
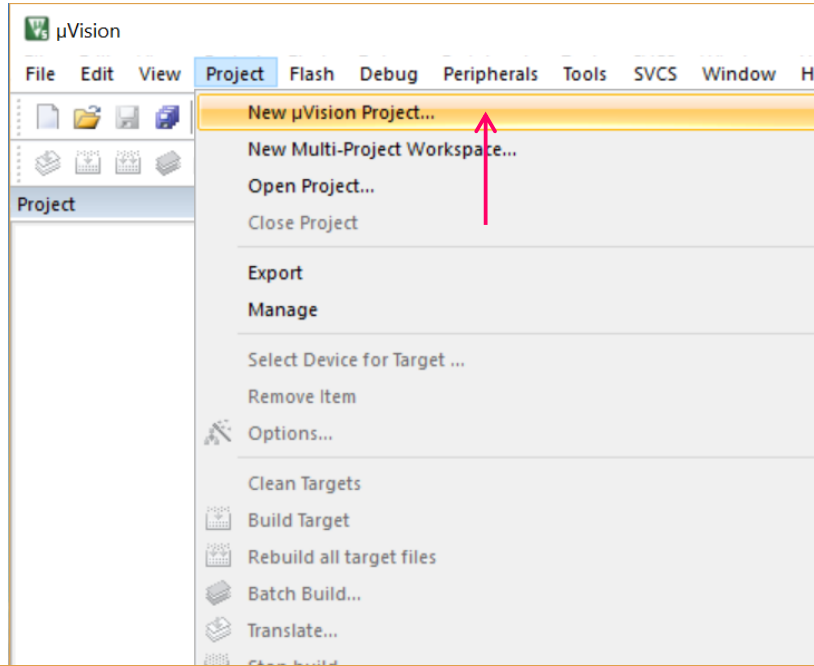
5. Do the same for the remaining device below:

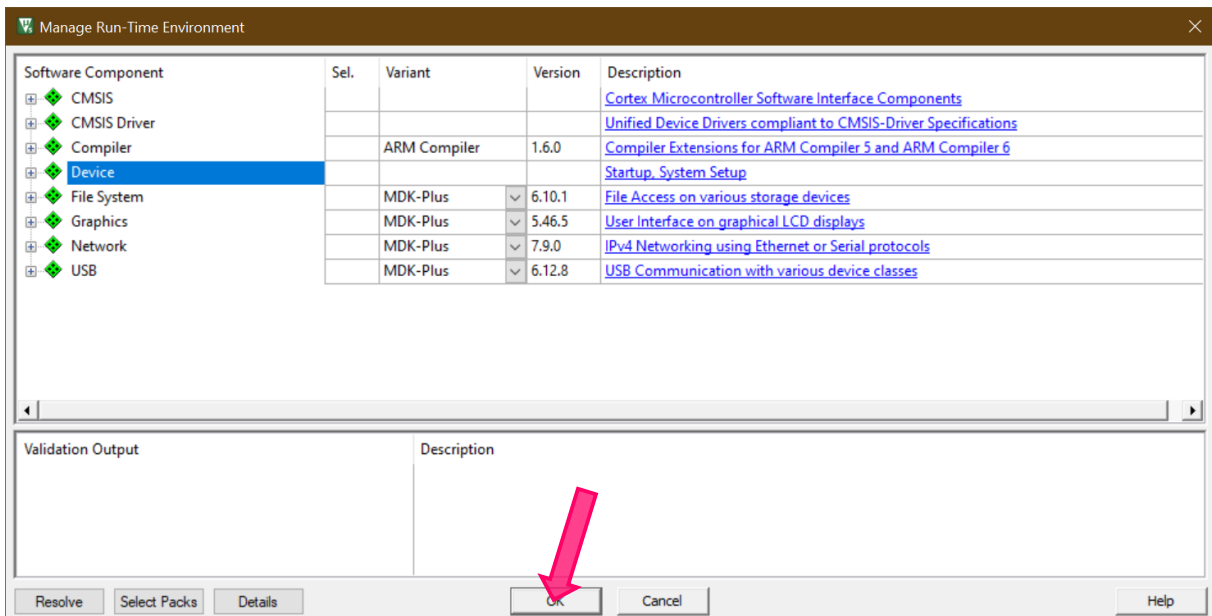
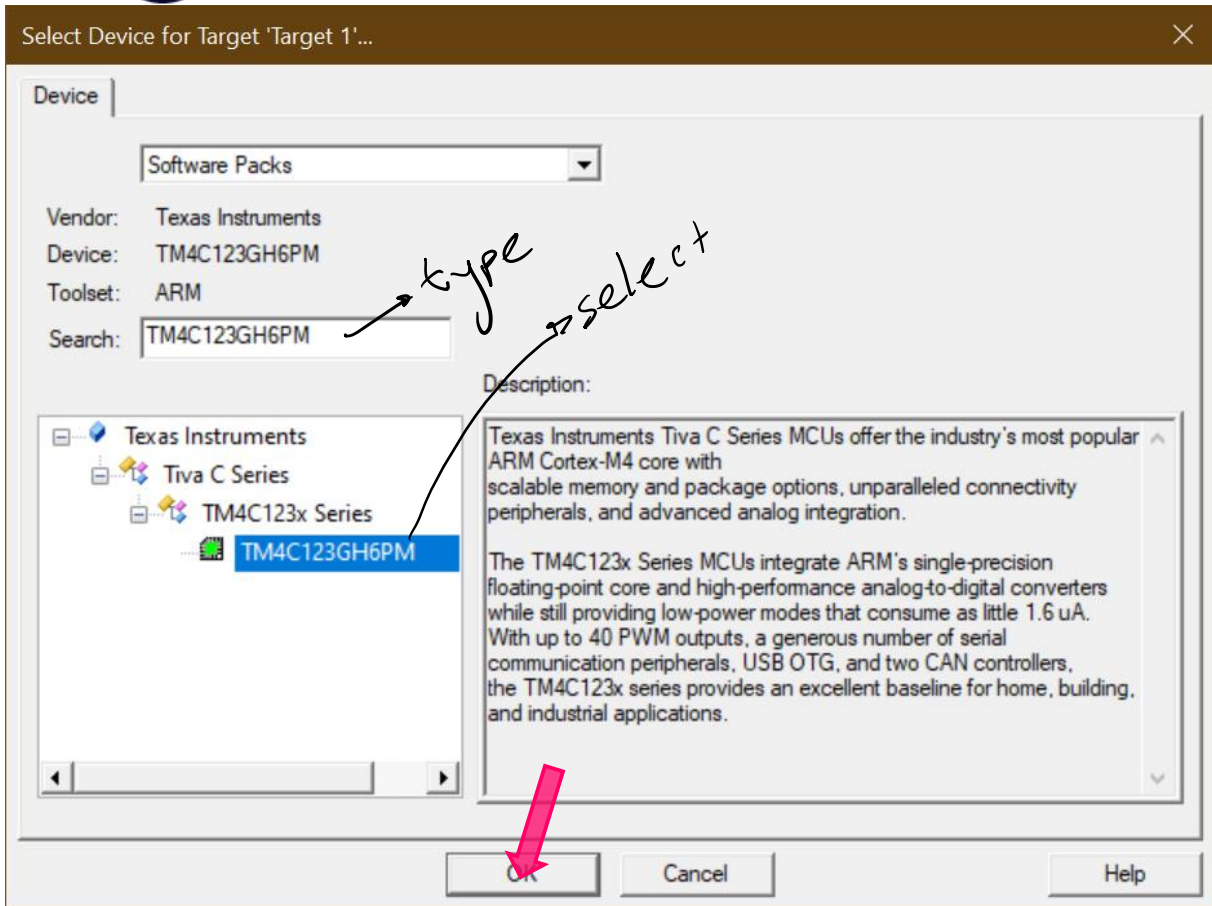


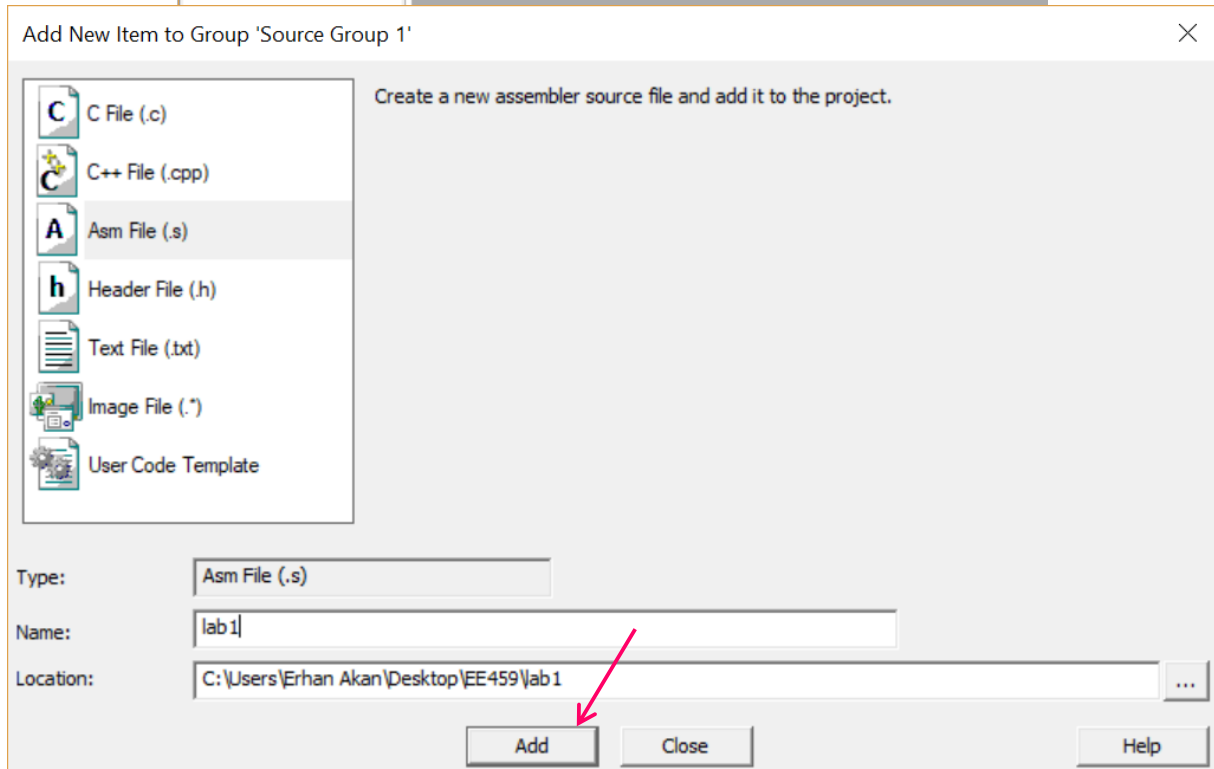
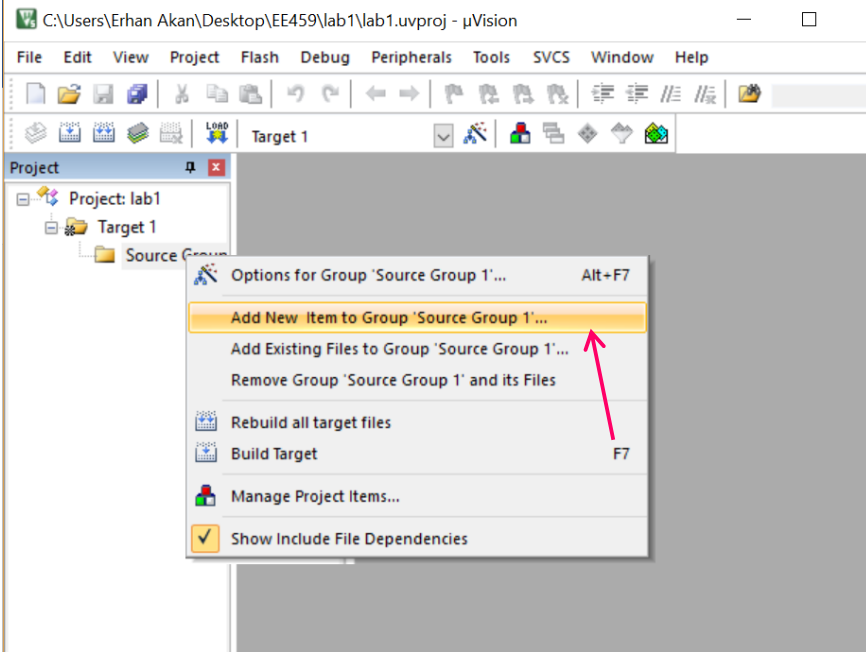


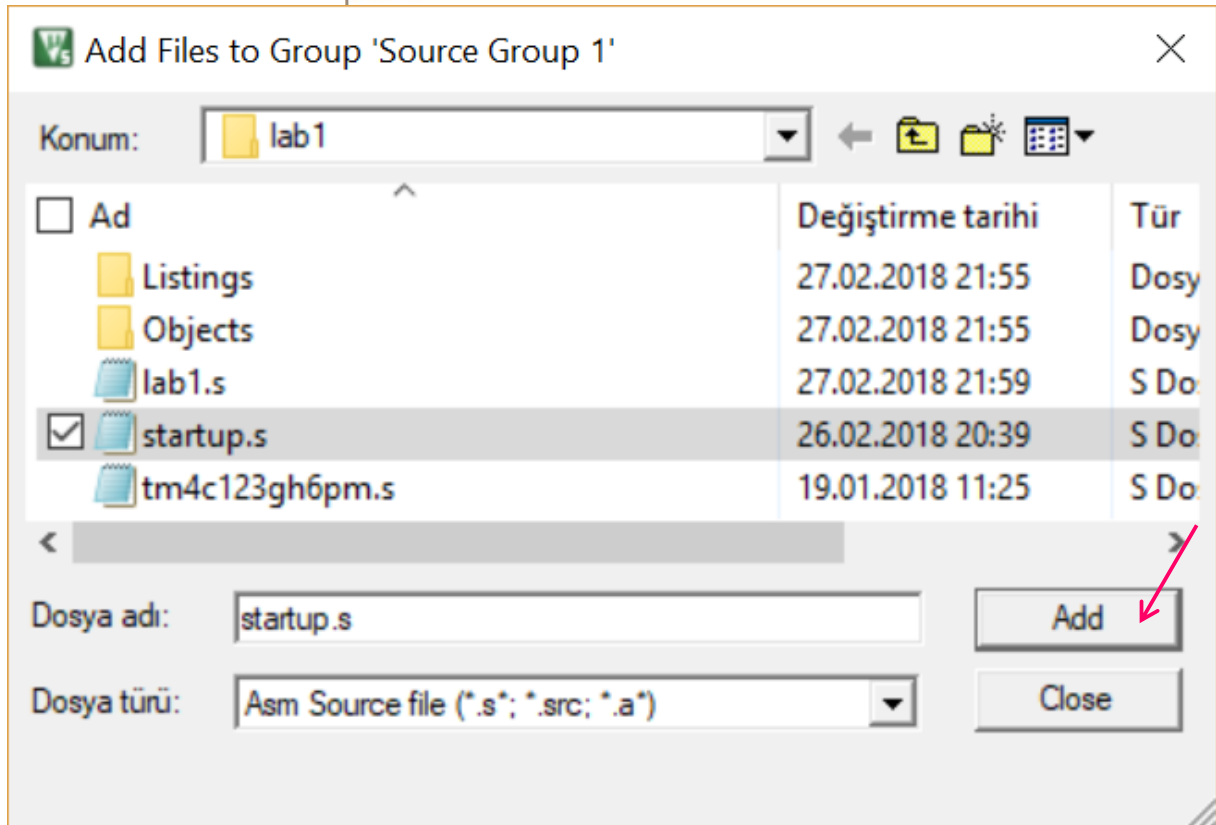
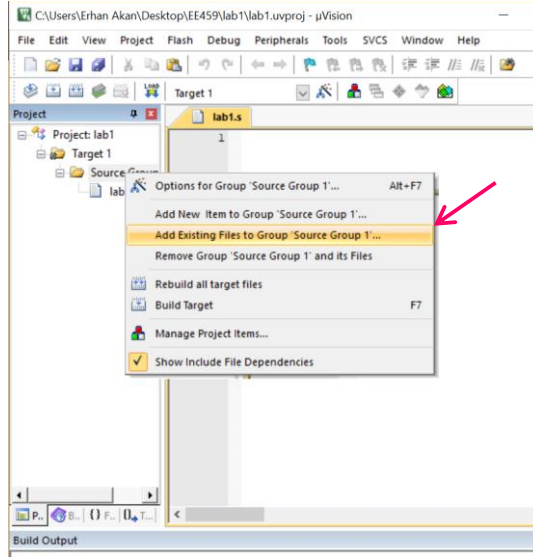
Creating a New Project

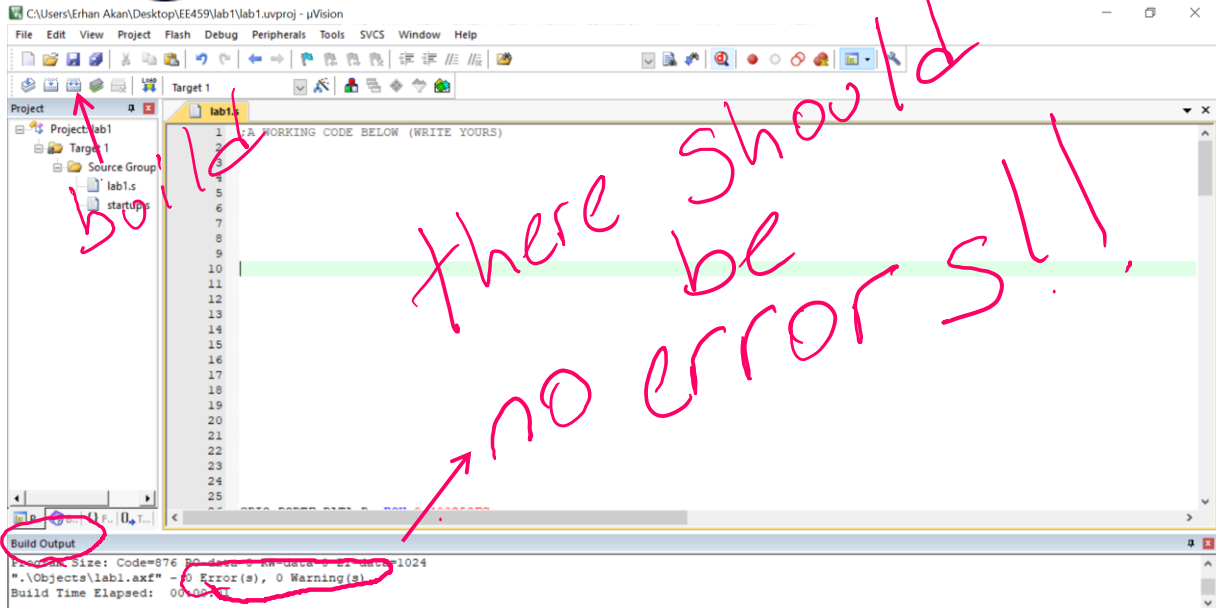
1. Run uVision and follow the instructions below:







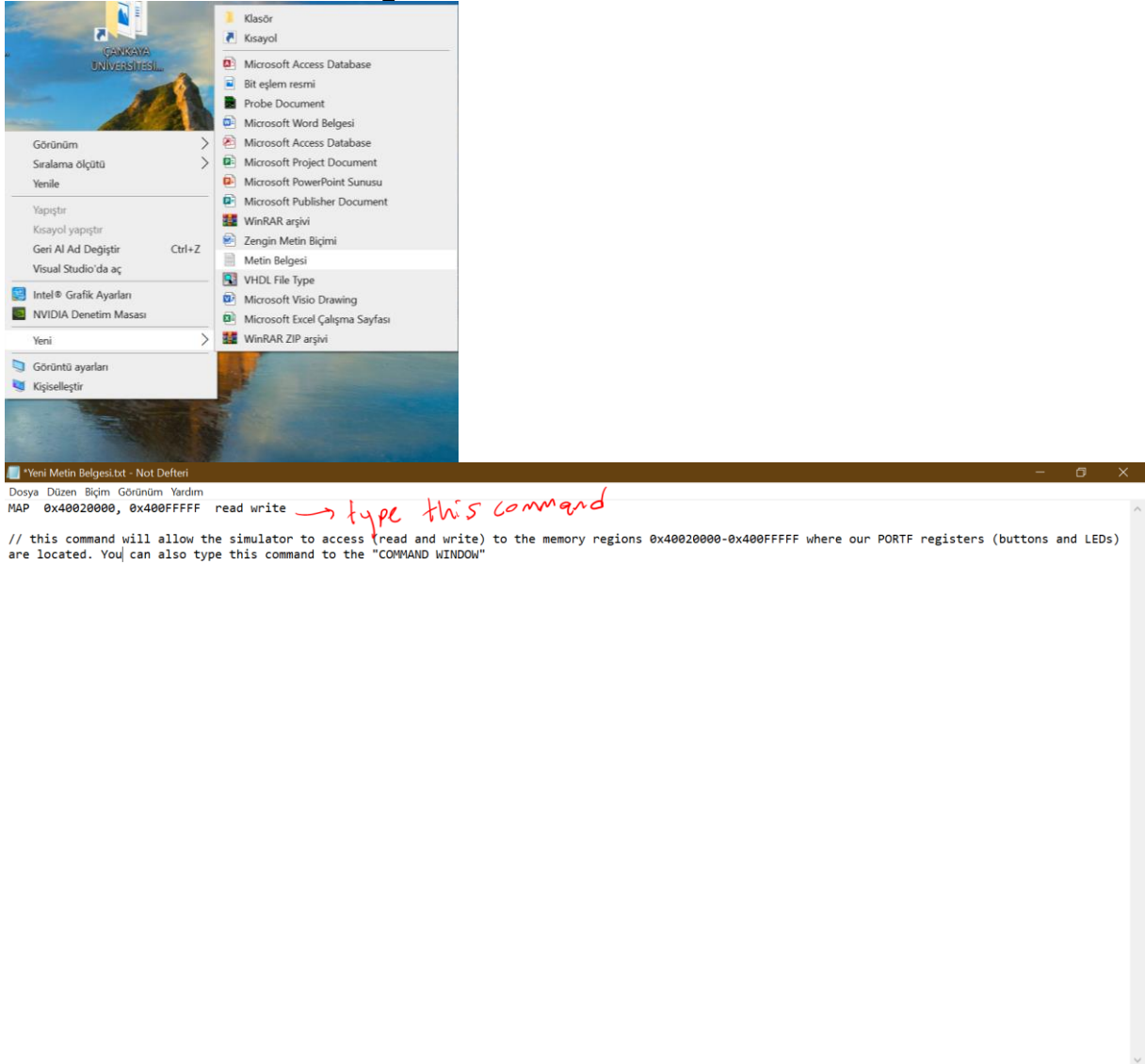




Note that, if there are some errors, you should check them one by one from the “build output” window and correct them all.



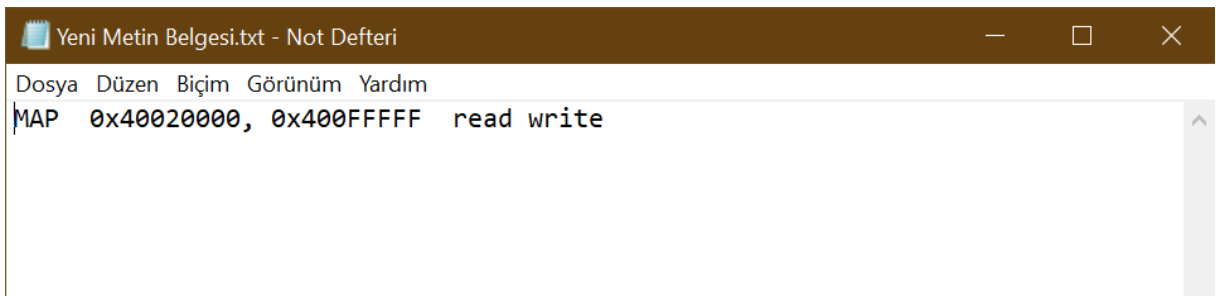
Now, at the desktop, create a txt file

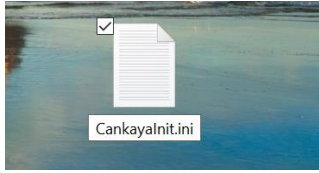


Just type

MAP 0x40020000, 0x400FFFFFF read write

And save this notepad file.



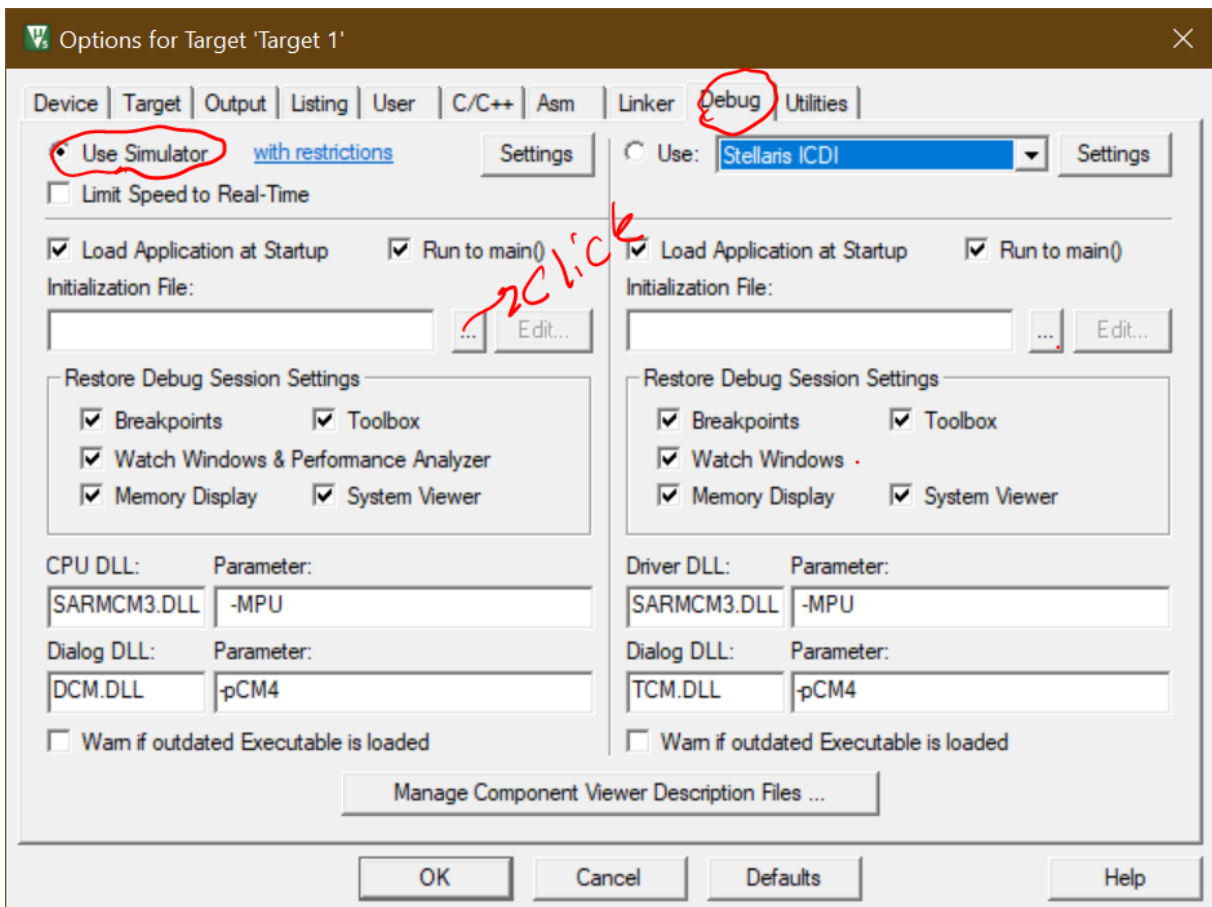
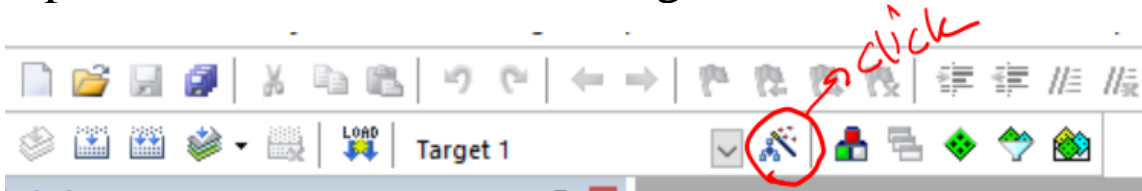


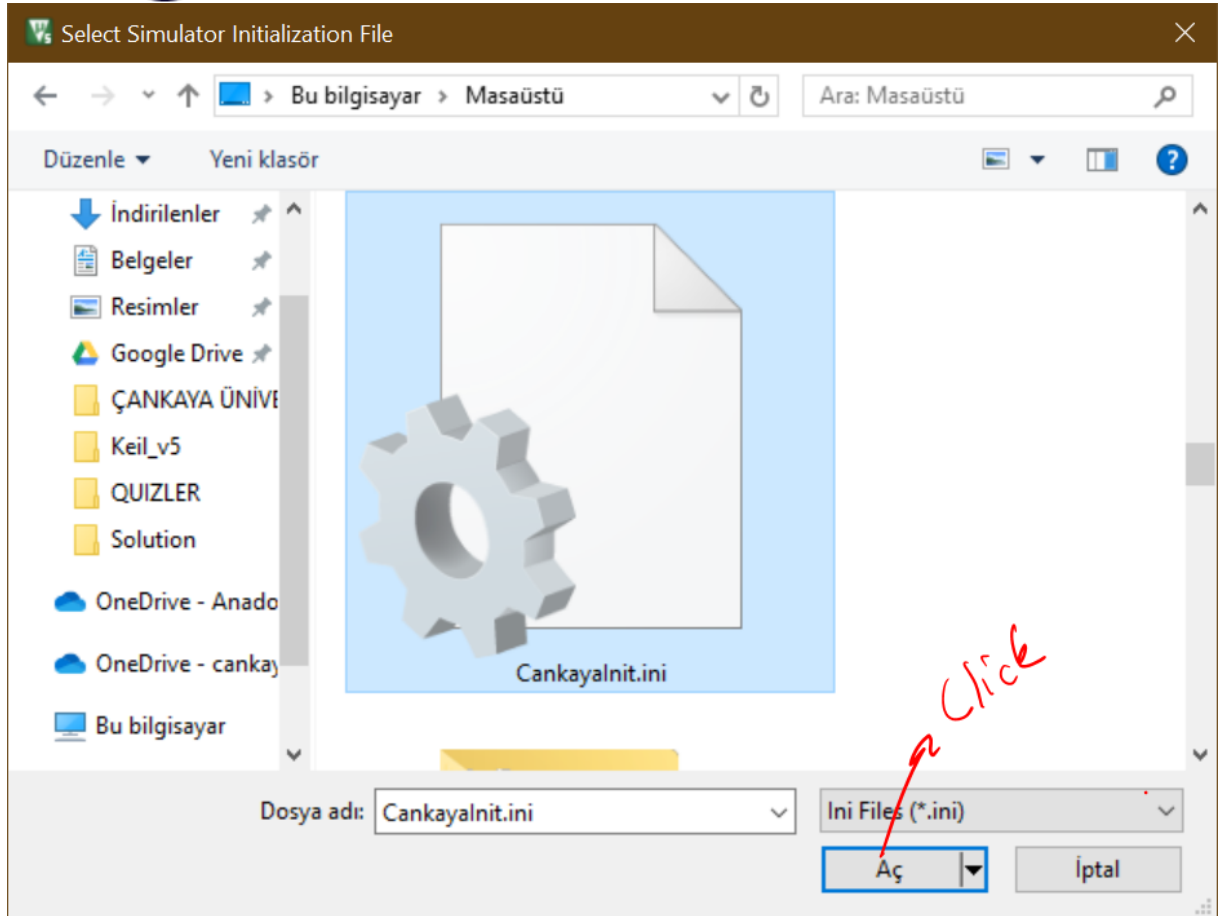
Then Don't forget to change file extension into the ".ini"

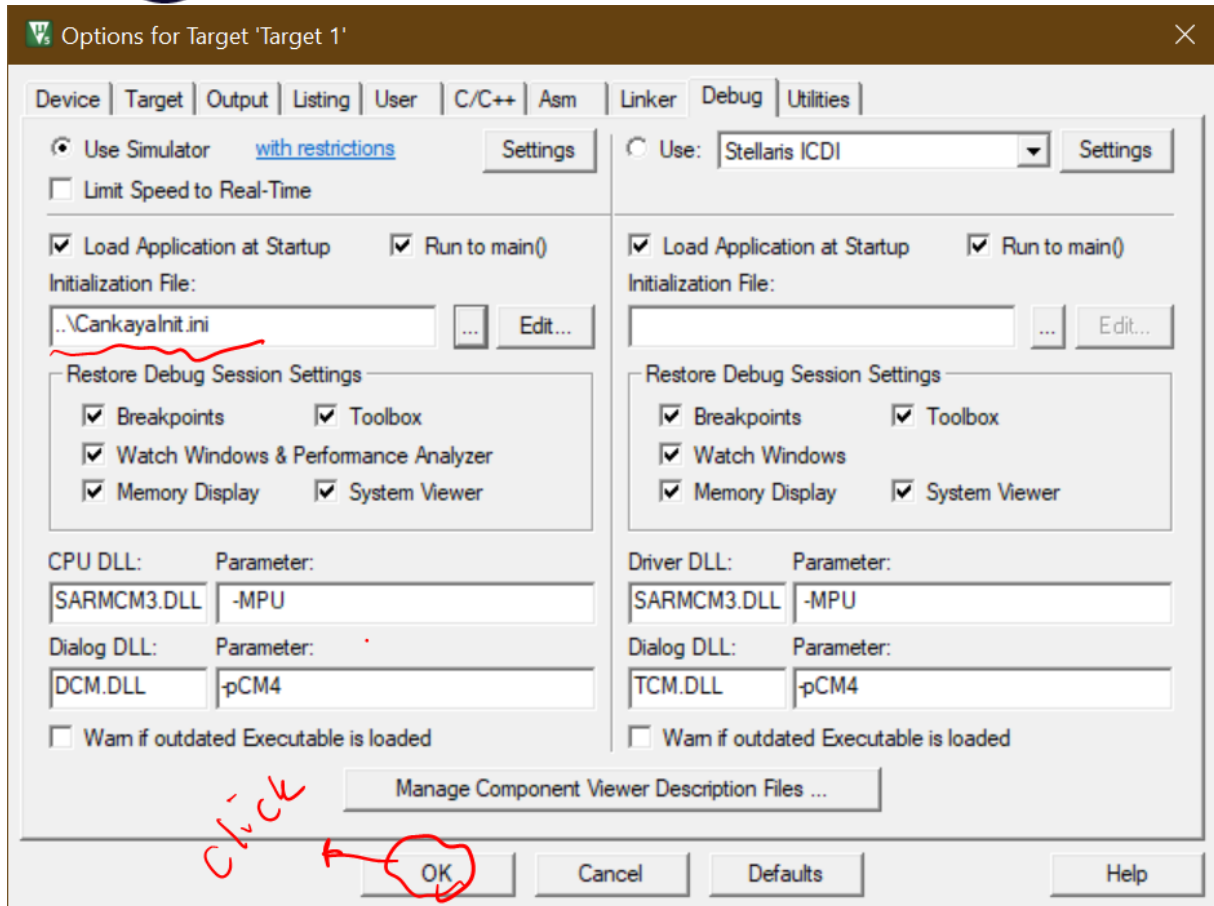


The file should look like that

Open Keil and do the followings:





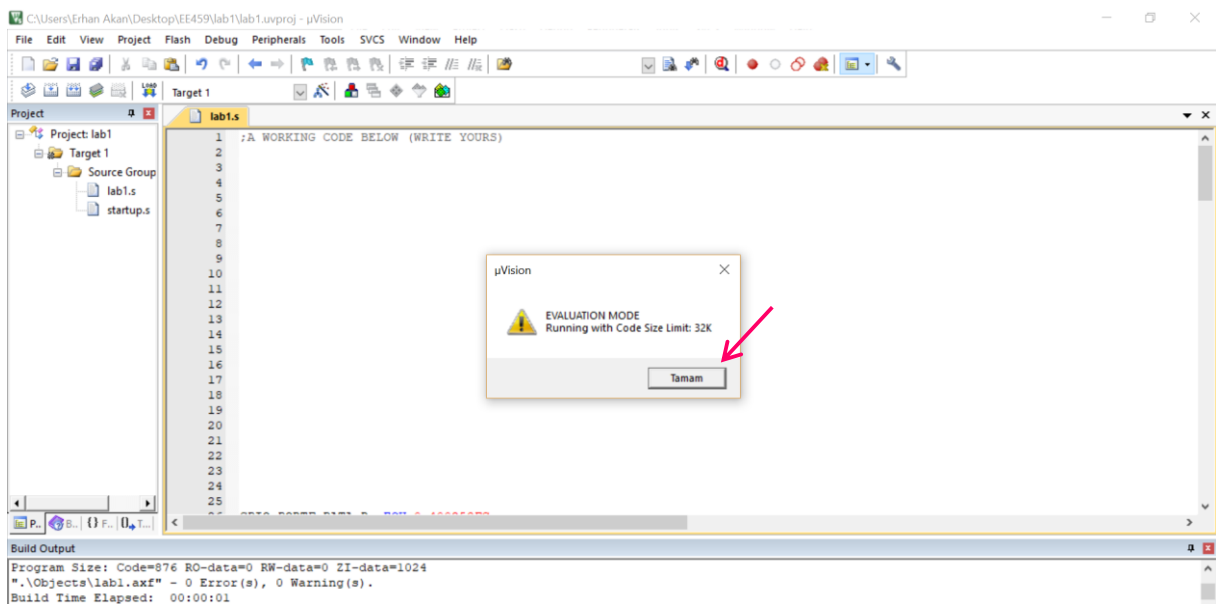
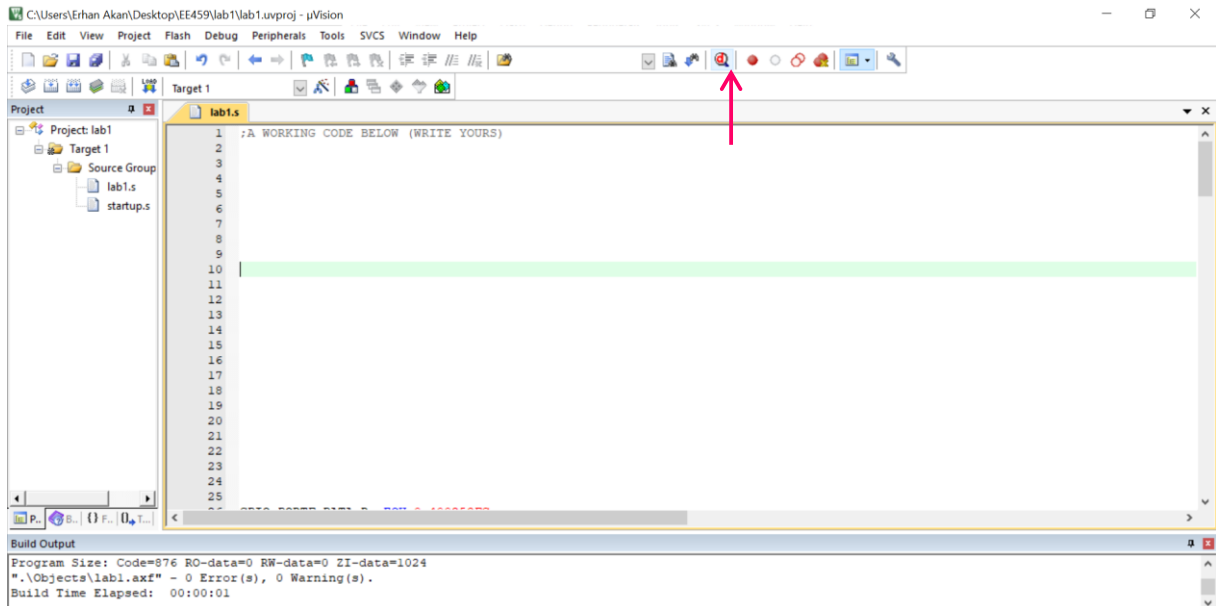


NOW, YOU WILL HAVE THE PERMISSION TO WRITE OR READ INTO/FROM THIS ADDRESS REGION



Debugging Your Code

1. Follow the steps below:





The screenshot shows the uVision IDE interface. The main window displays assembly code for a project named 'lab1.s'. The code includes a comment: `;A WORKING CODE BELOW (WRITE YOURS)`. The registers window on the left shows the core registers (R0-R15, xPSR) and their current values. The command window at the bottom shows the command line with the text: `ASSIGN BreakDisable BreakEnable BreakKill BreakList BreakSet BreakAccess`. The Call Stack + Locals window is also visible, showing a single entry for 'Memory 1'.